

Inclusiveness Poster Puzzle

Students need to work together to put the Inclusiveness Poster back together!

Caring Sub-Concept(s)

Kindness

Project Timeframe

15-20 minutes

Required Materials

- ☐ One Inclusiveness Poster cut out along the puzzle lines (do this in advance for each group or have students cut out the pieces themselves)
- ☐ Paper/glue (optional)

Put students into small groups of 3-4 and give them either:

- A pile of pre-cut poster puzzle pieces, or
- An Inclusiveness poster with the puzzle pieces outlined and ask students to cut out the pieces for their group.

The goal is for students to work together in their small group to reassemble the Random Acts of Kindness Foundation's Inclusiveness poster.

Once the poster is reassembled, have students each high-five each other and then put their hands up so you can go and check their work.

If they have correctly assembled the poster, give each student a high-five and then they can lower their hands. If desired, have students take turns gluing their puzzle pieces back together on a piece of paper and then coloring in the poster.

Optional Extension: Display the Inclusiveness Posters around the room, on your classroom door, or in the hallway by your classroom entrance.



DESIGNATED BY CASEL
AS A RECOMMENDED
PROGRAM FOR SOCIAL
AND EMOTIONAL
LEARNING.

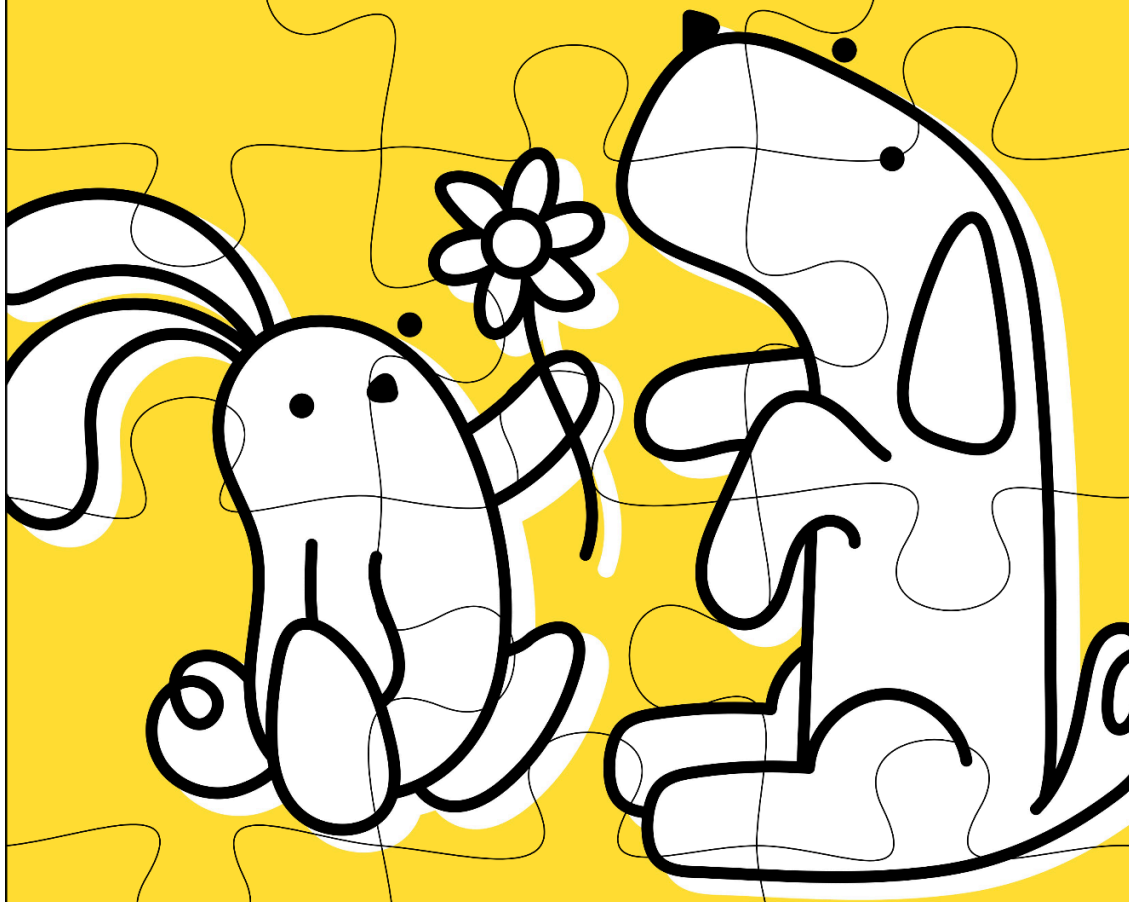
The Collaborative for Academic, Social, and Emotional Learning (CASEL) has been reviewing evidence-based SEL programs since 2003. Kindness in the Classroom® meets CASEL's SElect Program and is included in the CASEL Guide to Effective Social and Emotional Learning Programs.

Kindness in the Classroom® met or exceeded all of CASEL's criteria for high-quality SEL programming. Kindness in the Classroom® received CASEL's highest designation for high-quality SEL programming.

<https://casel.org/guide/kindness-in-the-classroom/>

INCLUSIVENESS

Including others, inviting them in,
and welcoming them with open arms.



RANDOM ACTS OF KINDNESS
FOUNDATION

www.randomactsofkindness.org

RANDOM ACTS OF KINDNESS
FOUNDATION®